

# Windham High School: 2017 NH YRBS Preliminary Report

---

## Alcohol Use - Behaviors: Time Trends, By Sex, and By Grade

Windham High School is in the Greater Derry Public Health Region and is served by the Bridges crisis center.

## PRELIMINARY RESULTS (v1.2)

This report contains preliminary results for 2017. All 2017 results are subject to change when the CDC returns the final dataset to the State, expected in early 2018. Please use caution when referring to and using these preliminary data until the final data set is received from the CDC. This report contains results for all questions asked on any YRBS survey since 2007. Note, access to regional level results were first made available in 2015 and are not available prior to that year.

## State and Regional Estimates

State and Regional estimates are calculated from a random sample developed using scientific survey methods. These methods ensure the respondents are representative of students in the region in the State. These estimates account for student, classroom, school, and regional factors. The random sample is not designed to provide school level estimates.

## School Level Estimates

The 2017 survey response rate at Windham High School was 87% where 786 of 901 students took the survey. **School level estimates are unweighted and based on a convenience sample of students in attendance, and not opting out of participation in the YRBS, on a given date and time during the school year.** However, because participation was relatively high the school estimates may still be representative of the entire school population. Results could be less representative if specific classrooms or classroom types were not included in the survey. We have attempted to estimate how many students in the school actually fall within each risk category. We did this by scaling up the students responding in the survey using school enrollment data.

Estimates number and percentage were suppressed (\*) if the underlying sample size was <60 respondents and/or cell sizes are between 1 and 5.

## Help and assistance

### Questions on this report (NH YRBS Community level preliminary report)

Health Statistics and Data Management

Division of Public Health Services - State of NH

NH.YouthRiskBehaviorSurvey@dhhs.nh.gov; (603) 271-4988;

### Additional technical assistance for YRBS related information

NH Center for Excellence

nhcenterforexcellence@jsi.com; (603) 573-3300

<http://nhcenterforexcellence.org/center-services/request-ta/>

## Change Log

**v1.2:** Indicators revised to display by CDC question direction as greater risk; and, revised methodology to more accurately display number of students projected based on school enrollment data.

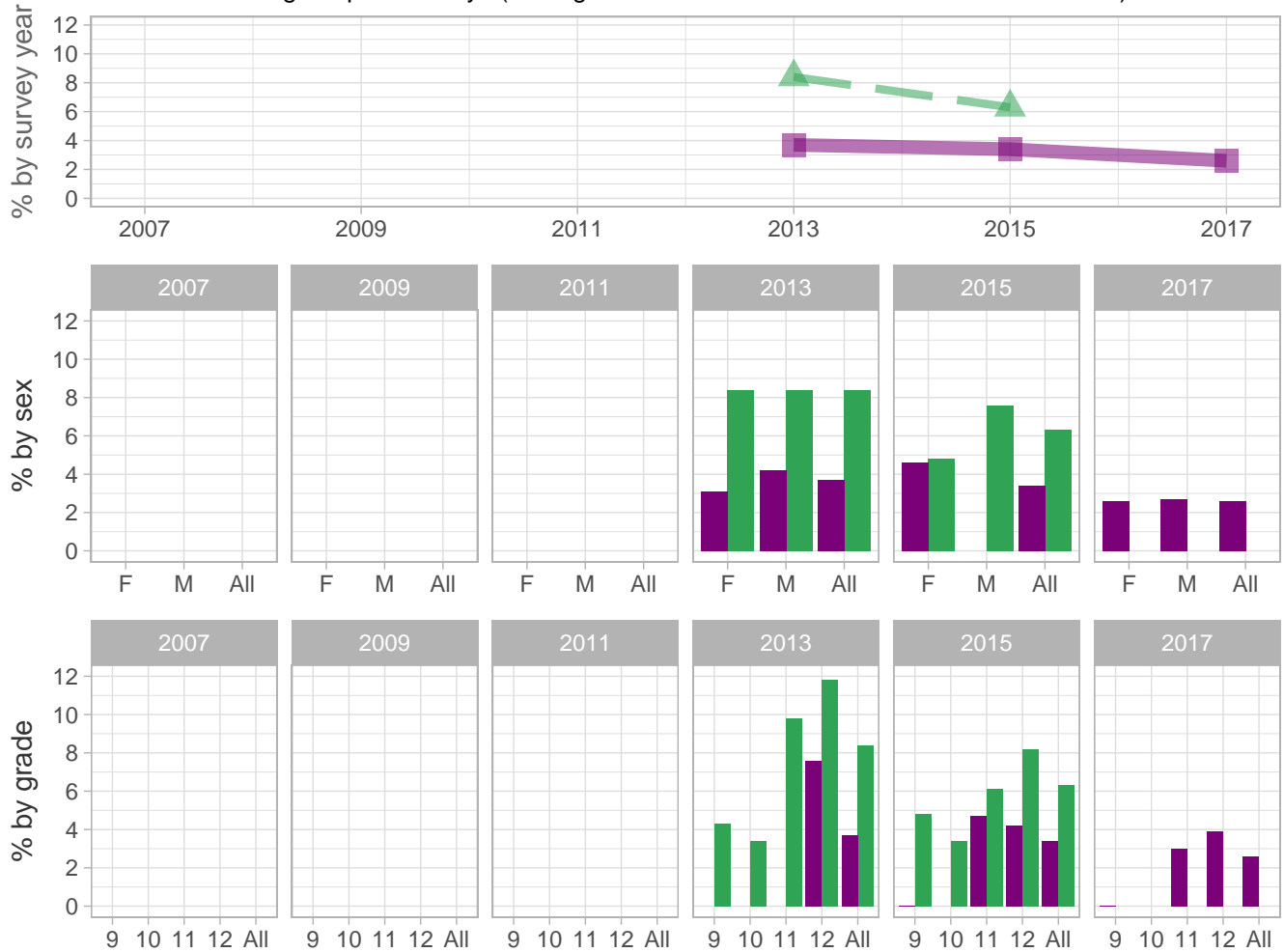
**v1.1:** School estimates corrected to include CDC sample - report sent 8/31-9/1

**v1.0:** Initial report sent 8/29

 School
  Region
  NH

### Alcohol Use – Behaviors

Percent of students who drove when they had been drinking alcohol in a car or other vehicle one or more times during the past 30 days (among students who had driven a car or other vehicle)



School-level by Sex and Grade

		2009(pct)	2011(pct)	2013(pct)	2015(pct)	2017(pct)	2017(n)
<b>By sex</b>	F	-	-	3.1	4.6	2.6	8
	M	-	-	4.2	*	2.7	9
<b>By grade</b>	9th	-	-	*	0.0	0.0	0
	10th	-	-	*	*	*	*
	11th	-	-	*	4.7	3.0	7
	12th	-	-	7.6	4.2	3.9	8
<b>All</b>	All	-	-	3.7	3.4	2.6	16

How the question was actually asked: During the past 30 days, how many times did you drive a car or other vehicle when you had been drinking alcohol?; a: I did not drive a car or other vehicle during the past 30 days ; b: 0 times ; c: 1 time ; d: 2 or 3 times ; e: 4 or 5 times ; f: 6 or more times;

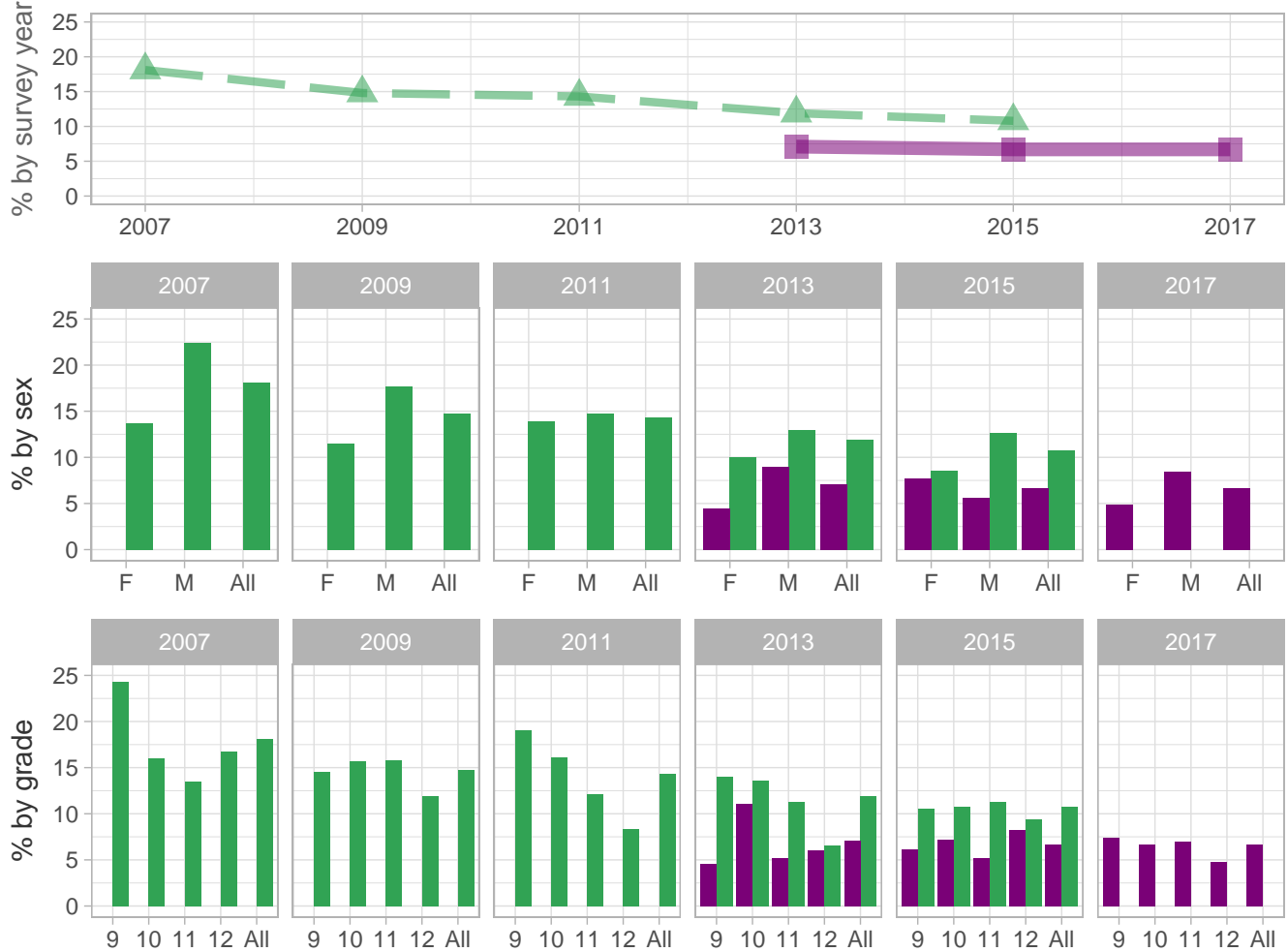
Percent (pct): numerator: cdef; denominator: bcdef; qid: 143; 2007q999; 2009q999; 2011q999; 2013q13; 2015q13; 2017q13; Number (n): Estimated number of students projected based on school enrollment data.

-: Data not available; \*: Suppressed due to small cell sizes.

 School
  Region
  NH

### Alcohol Use – Behaviors

Percent of students who drank alcohol (for the first time other than a few sips) before age 13 years



School-level by Sex and Grade

		2009(pct)	2011(pct)	2013(pct)	2015(pct)	2017(pct)	2017(n)
By sex	F	-	*	4.5	7.7	4.9	21
	M	-	*	9.0	5.6	8.5	40
By grade	9th	-	*	4.6	6.1	7.4	20
	10th	-	*	11.1	7.2	6.7	16
	11th	-	-	5.2	5.2	7.0	16
	12th	-	-	6.0	8.2	4.8	10
All	All	-	*	7.1	6.7	6.7	61

How the question was actually asked: How old were you when you had your first drink of alcohol other than a few sips?; a: I have never had a drink of alcohol other than a few sips ; b: 8 years old or younger ; c: 9 or 10 years old ; d: 11 or 12 years old ; e: 13 or 14 years old ; f: 15 or 16 years old ; g: 17 years old or older;

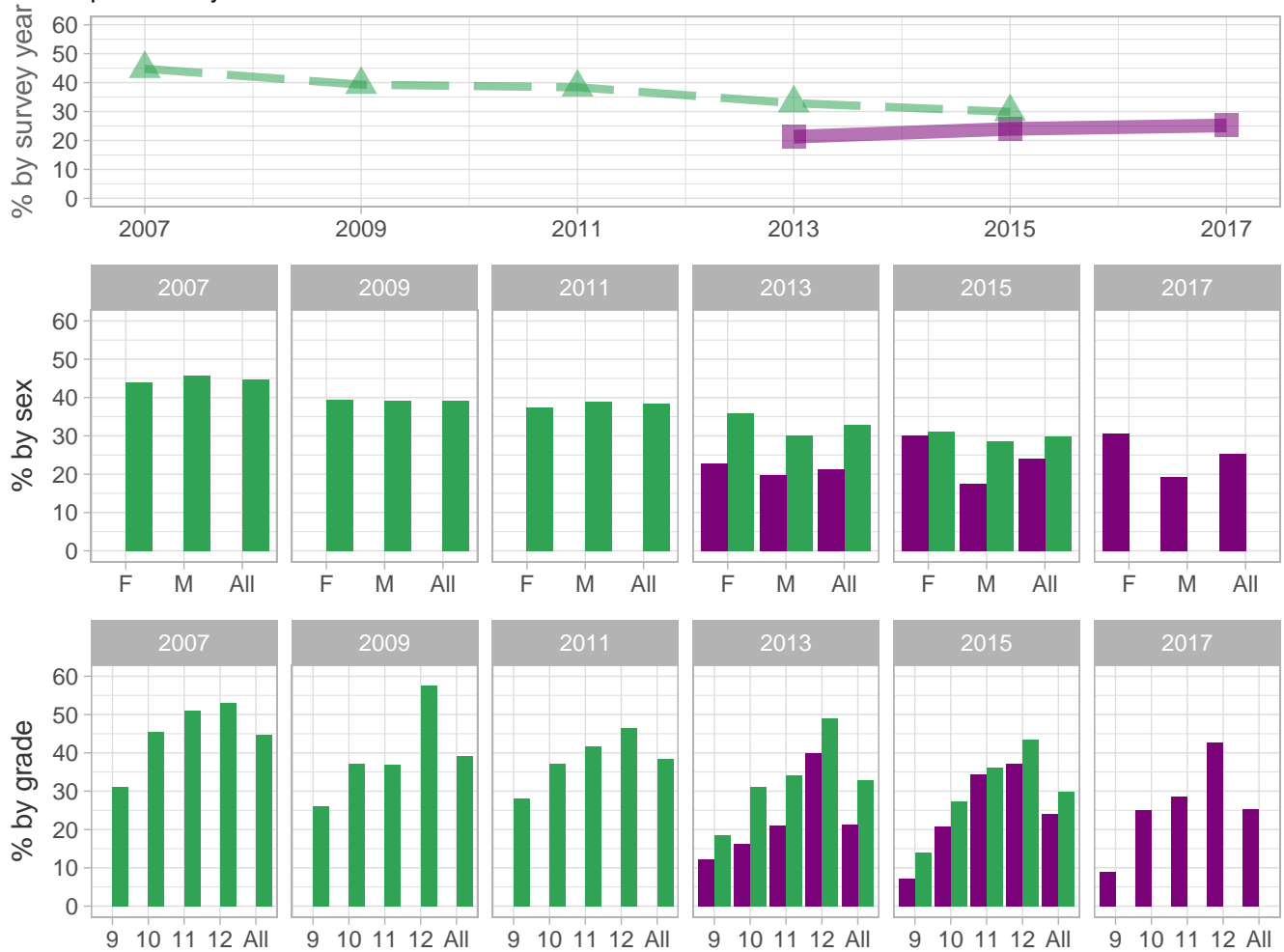
Percent (pct): numerator: bcd; denominator: abcdefg; qid: 34; 2007q34; 2009q31; 2011q34; 2013q40; 2015q38; 2017q40; Number (n): Estimated number of students projected based on school enrollment data.

-: Data not available; \*: Suppressed due to small cell sizes.

 School 
  Region 
  NH

### Alcohol Use – Behaviors

Percent of students who drank alcohol (at least one drink of alcohol) on at least 1 day during the past 30 days



School-level by Sex and Grade

		2009(pct)	2011(pct)	2013(pct)	2015(pct)	2017(pct)	2017(n)
By sex	F	-	*	22.9	30.0	30.7	132
	M	-	*	19.7	17.6	19.4	90
By grade	9th	-	*	12.2	7.3	8.9	24
	10th	-	-	16.2	20.8	25.1	56
	11th	-	-	21.1	34.5	28.6	63
	12th	-	-	40.0	37.2	42.6	82
All	All	-	*	21.3	24.0	25.2	228

How the question was actually asked: During the past 30 days, on how many days did you have at least one drink of alcohol?; a: 0 days ; b: 1 or 2 days ; c: 3 to 5 days ; d: 6 to 9 days ; e: 10 to 19 days ; f: 20 to 29 days ; g: All 30 days;

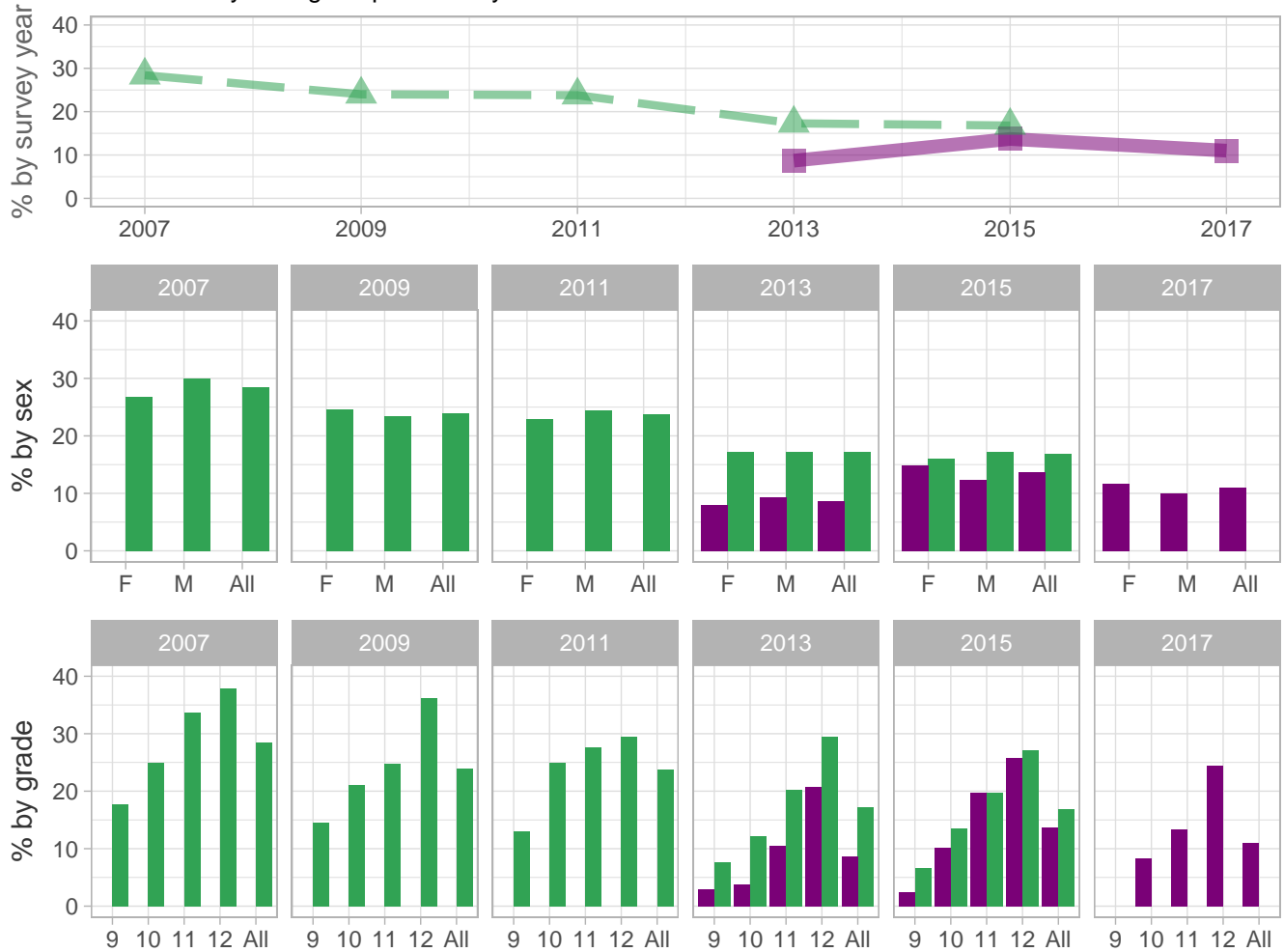
Percent (pct): numerator: bcdefg; denominator: abcdefg; qid: 35; 2007q35; 2009q32; 2011q35; 2013q41; 2015q39; 2017q41; Number (n): Estimated number of students projected based on school enrollment data.

-: Data not available; \*: Suppressed due to small cell sizes.

 School
  Region
  NH

### Alcohol Use – Behaviors

Percent of students who drank five or more drinks of alcohol in a row (within a couple of hours) on at least 1 day during the past 30 days



School-level by Sex and Grade

		2009(pct)	2011(pct)	2013(pct)	2015(pct)	2017(pct)	2017(n)
By sex	F	-	*	7.9	14.9	11.7	50
	M	-	*	9.3	12.4	10.0	47
By grade	9th	-	*	2.9	2.4	*	*
	10th	-	*	3.7	10.1	8.3	19
	11th	-	-	10.5	19.8	13.4	30
	12th	-	-	20.7	25.8	24.4	47
All	All	-	*	8.7	13.7	11.0	99

How the question was actually asked: During the past 30 days, on how many days did you have 5 or more drinks of alcohol in a row, that is, within a couple of hours?; a: 0 days ; b: 1 day ; c: 2 days ; d: 3 to 5 days ; e: 6 to 9 days ; f: 10 to 19 days ; g: 20 or more days;

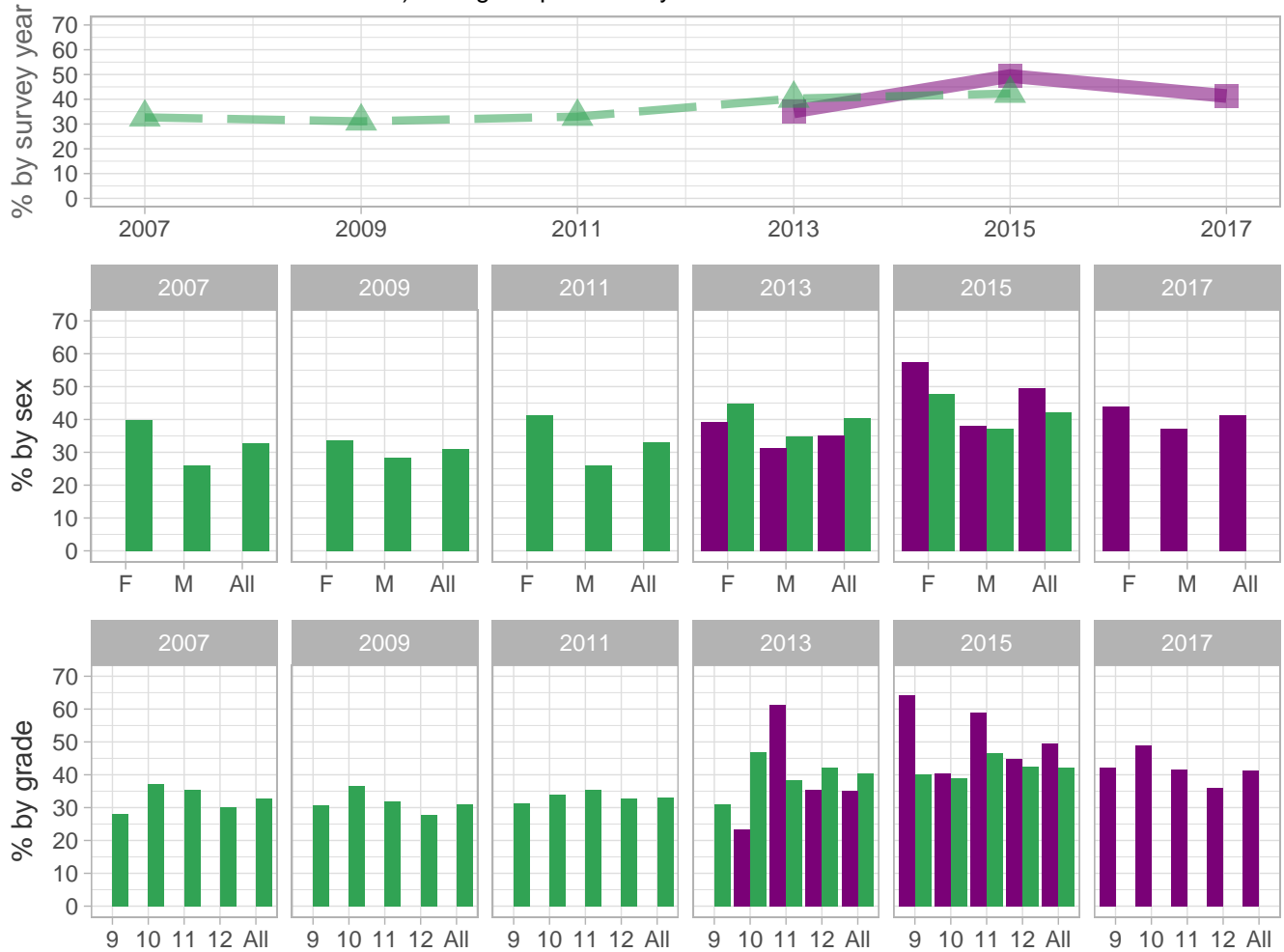
Percent (pct): numerator: bcdefg; denominator: abcdefg; qid: 36; 2007q36; 2009q33; 2011q36; 2013q43; 2015q40; 2017q42; Number (n): Estimated number of students projected based on school enrollment data.

-: Data not available; \*: Suppressed due to small cell sizes.

 School
  Region
  NH

### Alcohol Use – Behaviors

Percent of students who usually obtained the alcohol they drank by someone giving it to them (among students who drank alcohol) during the past 30 days



School-level by Sex and Grade

		2009(pct)	2011(pct)	2013(pct)	2015(pct)	2017(pct)	2017(n)
By sex	F	-	-	39.1	57.4	44.0	58
	M	-	*	31.2	38.1	37.1	32
By grade	9th	-	*	*	64.3	42.1	10
	10th	-	-	23.3	40.5	48.9	27
	11th	-	-	61.3	58.9	41.5	27
	12th	-	-	35.3	44.8	35.9	28
All	All	-	*	35.1	49.4	41.3	91

How the question was actually asked: During the past 30 days, how did you usually get the alcohol you drank?; a: I did not drink alcohol during the past 30 days ; b: I bought it in a store such as a liquor store, convenience store, supermarket, discount store, or gas station ; c: I bought it at a restaurant, bar, or club ; d: I bought it at a public event such as a concert or sporting event ; e: I gave someone else money to buy it for me ; f: Someone gave it to me ; g: I took it from a store or family member ; h: I got it some other way;

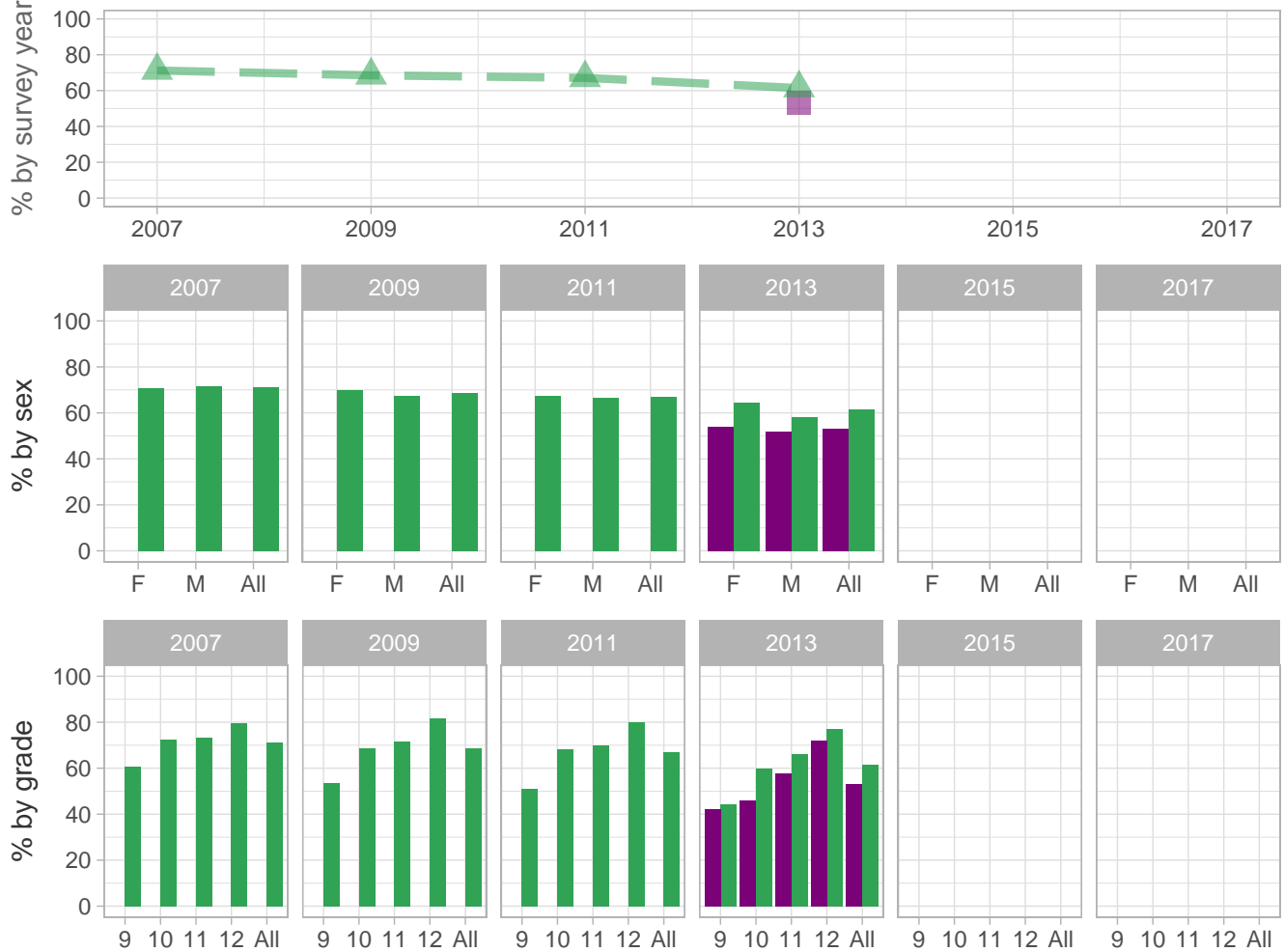
Percent (pct): numerator: f; denominator: bcdefgh; qid: 37; 2007q37; 2009q34; 2011q37; 2013q44; 2015q41; 2017q43; Number (n): Estimated number of students projected based on school enrollment data.

-: Data not available; \*: Suppressed due to small cell sizes.

 School  Region  NH

### Alcohol Use – Behaviors

Percent of students who ever drank alcohol (at least one drink of alcohol) on at least 1 day during their life



School-level by Sex and Grade

		2009(pct)	2011(pct)	2013(pct)	2015(pct)	2017(pct)	2017(n)
By sex	F	-	*	54.1	-	-	-
	M	-	*	51.8	-	-	-
By grade	9th	-	*	42.0	-	-	-
	10th	-	*	46.0	-	-	-
	11th	-	-	57.6	-	-	-
	12th	-	-	71.9	-	-	-
All	All	-	*	53.0	-	-	-

How the question was actually asked: During your life, on how many days have you had at least one drink of alcohol?; a: 0 days; b: 1 or 2 days; c: 3 to 9 days; d: 10 to 19 days; e: 20 to 39 days; f: 40 to 99 days; g: 100 or more days;

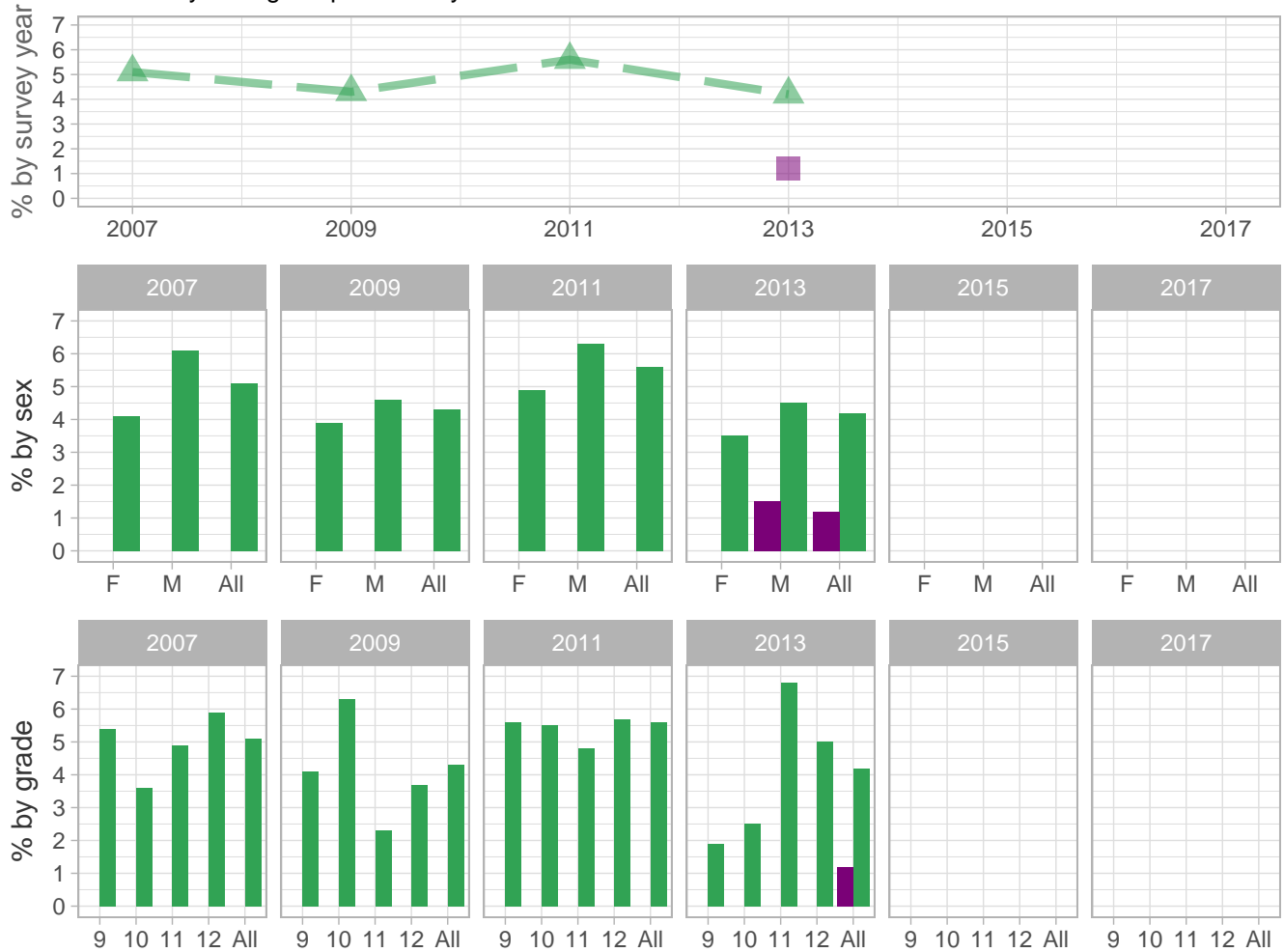
Percent (pct): numerator: bcdefg; denominator: abcdefg; qid: 33; 2007q33; 2009q30; 2011q33; 2013q39; 2015q999; 2017q999; Number (n): Estimated number of students projected based on school enrollment data.

-: Data not available; \*: Suppressed due to small cell sizes.

 School  Region  NH

### Alcohol Use – Behaviors

Percent of students who drank alcohol on school property (at least one drink of alcohol) on at least 1 day during the past 30 days



School-level by Sex and Grade

		2009(pct)	2011(pct)	2013(pct)	2015(pct)	2017(pct)	2017(n)
By sex	F	-	*	*	-	-	-
	M	-	*	1.5	-	-	-
By grade	9th	-	*	*	-	-	-
	10th	-	*	*	-	-	-
	11th	-	-	*	-	-	-
	12th	-	-	*	-	-	-
All	All	-	*	1.2	-	-	-

How the question was actually asked: During the past 30 days, on how many days did you have at least one drink of alcohol on school property?; a: 0 days; b: 1 or 2 days; c: 3 to 5 days; d: 6 to 9 days; e: 10 to 19 days; f: 20 to 29 days; g: All 30 days;

Percent (pct): numerator: bcdefg; denominator: abcdefg; qid: 38; 2007q38; 2009q35; 2011q38; 2013q42; 2015q999; 2017q999; Number (n): Estimated number of students projected based on school enrollment data.

-: Data not available; \*: Suppressed due to small cell sizes.